

# The new Galaxy® Dimension | Multi-dimensional security

Honeywell empowers you to make the best security decisions for your business

With expertise in every area of security, we provide discreet, hi-technology, integrated security solutions. We are one of the world's leading manufacturers of security systems and understand your need to keep your people, premises, assets and intellectual property safe and secure.

## Galaxy® Dimension Key Features

- ✓ **Integrated Intrusion and Access Control**
  - Up to 32\* independent protected areas
  - Up to 520\* detection zones
  - Up to 196 wireless zones
  - Up to 64 doors
  - Up to 1000 card holders per system
  - Up to 67\* Weekly schedules
- ✓ **Wired and wireless options available**
- ✓ **Supports up to 32\* keypads**
- ✓ **Support for graphical touch-screen keypad (up to 4\*)**
- ✓ **Event logs for Access and Intrusion (up to 1000 and 1500 events respectively)**
- ✓ **Supports several communications options (PSTN, ISDN, Ethernet)**
- ✓ **Up to 32\* Audio Verification (listen-in) channels**
- ✓ **Remote Management and User Management Suite PC software option supports entire Galaxy® range**
- ✓ **Single PC based central management solution**
- ✓ **Enhanced interfacing protocol for system integration**
- ✓ **Compliant to all relevant European standards**
- ✓ **Fully compatible with existing Galaxy® range**

\* on GD-520 version



Class-leading peripherals: using the latest technologies



Galaxy® Dimension TouchCenter

Access control devices

Wireless Sensors including DUAL TEC®

### Find out more:

[www.honeywell.com/security/uk](http://www.honeywell.com/security/uk)  
 Fax: +44 (0) 1698 738300  
 Email: [HSUK64SalesTeam@Honeywell.com](mailto:HSUK64SalesTeam@Honeywell.com)

### Honeywell Security Group

Newhouse Industrial Estate  
 Motherwell  
 Lanarkshire  
 ML1 5SB  
 Scotland  
 Tel: +44 (0) 1698 738200

Ampèrestraat 41  
 1446 TR Purmerend  
 The Netherlands  
 Tel: +31 (0) 299-410200  
[www.honeywell.com](http://www.honeywell.com)



HSC-GDIM-03-EN(0610)SB-C  
 June 2010  
 © 2010 Honeywell International Inc.

Galaxy® Dimension



INTRUDER AND ACCESS CONTROL: A UNIQUE AND FULLY INTEGRATED SOLUTION, WITH THE FLEXIBILITY TO MEET YOUR EVERY BUSINESS NEED

**A new dimension in security**

# Galaxy® Dimension | Integrated intrusion and access goes wireless

## Make security an asset not a burden

Whatever your business, the right level of protection for your people and assets is vital. After all, burglary could seriously impact your bottom line...

In Galaxy® Dimension, Honeywell offers you a security solution that you can trust. It protects simply and effectively - becoming an asset, not a burden, to your business.

## Look to the future with Galaxy® Dimension:

- Fifty years industry experience
- Proven Galaxy® technology
- Patented wireless technology, ensuring optimal performance of a wide range of peripherals/sensors designed for intrusion, life safety and environmental protection
- First class system support
- A long-term investment
- Flexibility, in line with your business needs
- Compatibility with existing systems

## What is Galaxy® Dimension?

Galaxy® Dimension is a versatile high security solution that seamlessly merges intruder and access control functions. Galaxy® Dimension now features a new wireless capability with a complete range of peripherals.

Offering maximum round the clock protection for any business no matter how large or complex, it provides superior flexibility and functionality using class leading technology.

The revolutionary graphical touch-screen control centre now with integrated proximity function simplifies operation and helps reduce operator error. Remote servicing options mean that your system consistently operates at its optimum level, and can even alert an engineer to issues between service intervals.

**Galaxy® Dimension offers peace of mind in a simple, secure and reliable system, making it a winning solution for your business.**

## Securing your people and your premises

Galaxy® technology is already the preferred system choice across many sectors that require large security systems. Installed in retail, financial, local authority and industrial premises, the functionality and flexibility of our technology meet a diverse range of needs.

The new Galaxy® Dimension takes security to a higher level, achieving true integration by bringing together intrusion protection and access control in a way that benefits many different businesses:



### Retail

- Remote management of multiple sites from a central location
- Protection of secure areas at all times, whilst allowing easy access for authorised personnel
- Wireless options to avoid disruption to décor and daily business
- For sites with multiple areas and many users, TouchCenter's clear, easy to follow graphics simplify system operation, reducing errors and false alarms

### Industrial

- Large-scale security, customisable to allow specific areas of the site to be operated independently of each other
- Centralised system management and reporting
- Time savings with our wireless solutions, with the flexibility to protect inaccessible areas
- Early warning of potential environmental risks (such as flooding and fire)

### Local Authority

- Conveniently controlling free movement of employees and clients across authorised access boundaries
- Simplified staff management, using existing personnel proximity cards for access and system control

### Corporate & Financial

- Protection of vaults and ATMs is easily catered for through dedicated input and control features
- Highest security levels are maintained through system automation and customised scheduling

# The new Galaxy® Dimension | Taking the wireless route



## Go wireless for speed and practicality

Because it eliminates cable and connection faults, Galaxy® Dimension wireless solution minimises the likelihood of cabling problems and reduces the amount of on site servicing needed as the system can be maintained remotely.

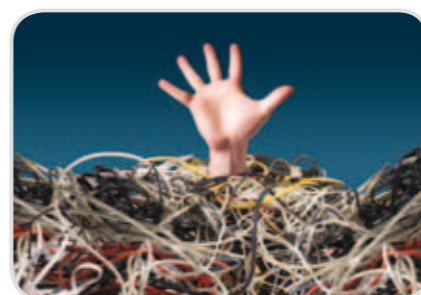
## Go wireless for added flexibility and reliability

Galaxy® Dimension now offers powerful new wireless solutions for commercial and industrial businesses. These enable your business to benefit from all the advantages of the trusted Galaxy® platform in a wireless solution. This powerful commercial platform minimises any disruption to your business, it enables you to place wireless sensors in areas where cables would be impractical or expensive.

The wireless solution is based around superior Dimension software, our RF portals and a selection of versatile wireless sensors. The RF portals transmit and receive signals to and from the wireless sensors, using two powerful technologies:

- **Bi-directional radio** – the sensor keeps sending a signal until it receives an acknowledgement from a portal, giving enhanced signal success
- **Agile routing** – this allows several paths to receive signals when several RF portals are installed – and the sensors look for the strongest signal

Together, these technologies provide an ideal solution for medium and large businesses (ranging from department stores to airports). They provide the **highest levels of security and reliability** in this class of wireless system. The new wireless DUAL TEC® motion sensor provides far superior reliability and efficient performance, ensuring quicker reaction to alarms and minimising false alarms.



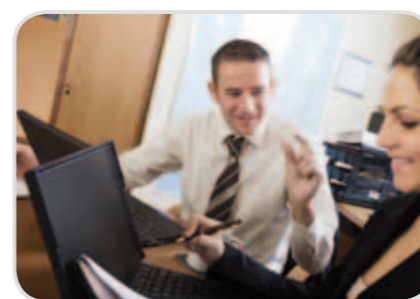
## Get more from your wireless security system

Galaxy® Dimension's wireless range also protects commercial sites from risks other than intrusion. For instance, the new flood and temperature sensor gives an early warning of a potential flood or an unacceptable change in temperature. This enables you to intervene at an early stage to minimise the damage and disruption caused by floods or faulty appliances.



## Peace of mind

The integrated system design simplifies user operation, whilst maximising overall security. Our two-way wireless key fobs allow users to instantly set or unset the system from in or outside the premises and also display the system's status (using LEDs on the key fob). This helps to reduce operator error and related false alarms. With one of the most comprehensive and reliable wireless security systems in the market, using the most popular bi-directional radio technology in Europe, your business will be in the best hands for its security needs.



## Faster and less invasive installation

A wireless solution causes minimal disruption to businesses, as no cabling is required (which also eliminates the need to redecorate). Because the installation is faster, there is less down time for business operations.

## How will Galaxy® Dimension's integrated system benefit your business?



## Maximum convenience, maximum security

Combining access and intrusion into one integrated system provides a single point of contact, simplifying operation and flexibility. Changes and extensions to the system are quick and easy, and our secure remote management tool enables the system look after itself. Because it is self-monitoring and communicates directly with the engineer, for remote diagnosis and maintenance, far fewer site visits are needed.

## Efficiently managing your people and places

Using a single intuitive interface, you can easily control access levels for different groups of personnel, using templates and schedules that you can programme to activate automatically.

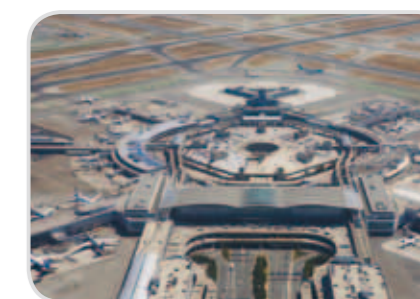


## Simplicity of operation

Free up your time using our simplest ever user interface! System operation and management becomes quick and easy using our innovative TouchCenter keypad with optional proximity function.

With the addition of prox tag identification, so no PIN code to remember, user errors are reduced, eliminating false alarms and inconvenient engineer call outs. You can easily view the full system status at a glance via the TouchCenter's large, colour touch-screen with its crystal clear graphics. There is no need for extensive system training as a clear and simple menu guides you through the system and on-screen help files are available at your fingertips.

With integrated access control, simple swipe or touch-n go readers allow personnel to gain access to assigned parts of the building. People in charge of security can also use the readers to arm and disarm the intruder alarm functions, giving maximum flexibility with no added complications!



## A system with no limits

Galaxy® Dimension is able to seamlessly merge with other systems (such as CCTV and environmental control) to become an integral part of your building management solution.



## A flexible solution

The Galaxy® Dimension range is fully flexible, providing you with the best fit and specific functionality for your security needs. Upgrading needn't cost the earth. In a straightforward swap, Galaxy® Dimension can replace your legacy system with ease.