

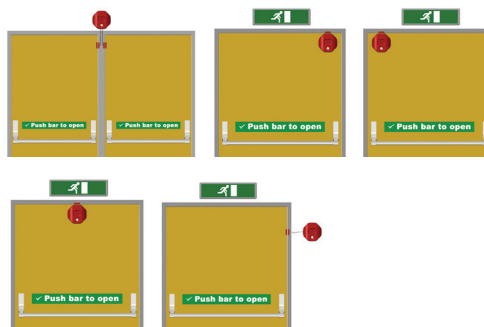
# STI Exit Stopper®



STI-6400



STI-6400-G



## PRODUCT OVERVIEW

The Exit Stopper is a unique and highly effective way to alert you to any unauthorised exits or entries through emergency exit doors. It can also serve as an inexpensive security device and help prevent theft. It is available in red or green and can be mounted or installed on almost any type of door, including remote placement of the sounder. The highly visible 'STOP' sign discourages unauthorised use of emergency doors.

## HOW IT WORKS

If the protected door is opened, the electronic Exit Stopper emits an ear piercing alarm. When the door is closed, a number of reset options are available including an automatic function. A variety of alarm durations and setup features are available (see User Programmable Features chart overleaf). A key operated override facility will silence the alarm and allow authorised exits. The Exit Stopper is fitted with a 9V PP3 alkaline battery.

## KEY FEATURES

### General Information

- Prevent unauthorised exits and entries through emergency exit doors.
- Three year guarantee against breakage of polycarbonate in normal use (one year on electromechanical and electronic components).

### Design

- Compact design (136mm diameter and 50mm deep).

### Construction

- Virtually indestructible polycarbonate cover is UV stabilised.

### Installation

- Highly versatile; can be mounted or installed on any type of door, including remote placement of sounder.
- Can be installed and protecting doors in minutes.

### Electronics

- Powered by a 9V PP3 alkaline battery (included).
- Incorporates a 12/24 VDC connection.
- 40 milliamp 9 VDC trigger output.

### Options

- Variety of user programmable features.
- A key operated override facility will silence the alarm and allow authorised exits.

### Remote Wireless Monitoring of Exit Doors

- You can now be alerted to any vandalism or authorised use of a fire exit door in the event of an emergency. Upon activation, the Exit Stopper (when fitted with an optional transmitter and sounder) will emit a localised alarm as well as triggering the 4-Channel (STI 34104) or 8-Channel Receiver (STI 34108), providing a visual and audible indication, remotely.



For more information, call +44 (0)1527 520 999 or visit [www.sti-europe.com](http://www.sti-europe.com)



**Safety Technology  
International**

# STI Exit Stopper®

Dimensions and Technical Information

## MODELS AVAILABLE

- STI-6400** Exit Stopper
- STI-6401** Exit Stopper with delay and automatic reset feature
- STI-6402** Exit Stopper, suitable for a double door installation
- STI-6405** Exit Stopper with momentary reset
- STI-6406** Exit Stopper with dual access control

### Accessories:

- STI-6400-RK** Remote installation kit
- STI-6400-RS** Remote 95/105 dB sounder
- STI-6400WIR** Wireless Exit Stopper
- STI-6400WIR8** Wireless Exit Stopper with 8 channel receiver
- STI-V6400WIR4** Wireless Exit Stopper with 4 channel voice receiver
- STI-C023/A** Spare key
- STI-L6400** Alarm warning emergency exit sign

### Options

**COLOURS** For green, add -G

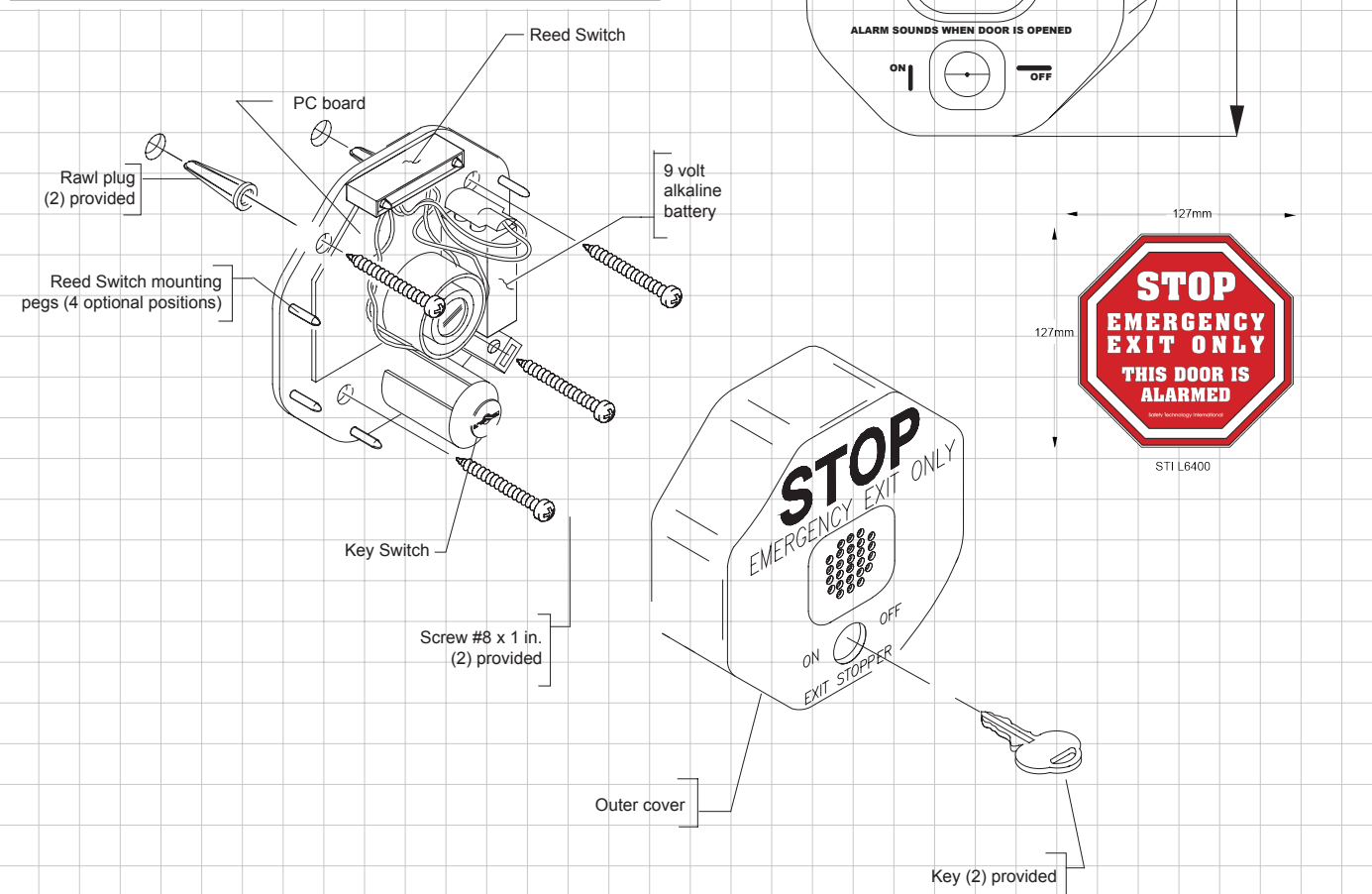
**AVAILABLE** (e.g. STI-6400-G for Exit Stopper in green)

## SPECIFICATIONS

|                             |                             |
|-----------------------------|-----------------------------|
| Housing                     | 3mm polycarbonate           |
| Power Source                | 9 VDC Alkaline              |
| Sounder Output (at 1 metre) | 95 dB - low / 105 dB - high |
| Relay Output                | 9 VDC, 40mA                 |
| Dimensions                  | 136mm W x 136mm H X 50mm D  |
| Alarm Current               | 200mA                       |
| Standby Current             | 10uA                        |

| User Programmable Features | JP2 | JP3 | JP4 | JP5 | JP7 |
|----------------------------|-----|-----|-----|-----|-----|
| High Volume* (105 dB)      | ON  |     |     |     |     |
| Low Volume (95 dB)         | OFF |     |     |     |     |
| Immediate Arming*          |     |     |     |     | ON  |
| 15 Second Arming Delay     |     |     |     |     | OFF |
| Immediate Activation*      |     |     |     | OFF |     |
| 15 Second Activation Delay |     |     |     | ON  |     |
| 30 Second Alarm Duration*  |     | OFF | OFF |     |     |
| 180 Second Alarm Duration  |     | OFF | ON  |     |     |
| Continuous Alarm Duration  |     | ON  | OFF |     |     |
| Door Prop Mode (5 beeps)   |     | ON  | ON  |     |     |

\* Factory settings



|  |   |  |   |  |   |
|--|---|--|---|--|---|
|  | Safety Technology International   | <b>UK Office</b><br>Taylor House<br>34 Sherwood Road<br>Bromsgrove<br>Worcestershire<br>B60 3DR, England | Tel: +44 (0)1527 520 999<br>Fax: +44 (0)1527 501 999<br>info@sti-europe.com<br>www.sti-europe.com | <b>USA Head Office</b><br>2306 Airport Road<br>Waterford, Michigan<br>48327 - 1209 | Tel: +248-673-9898<br>Fax: +248-673-1246<br>Toll-free: 0800-888-4STI<br>info@sti-usa.com<br>www.sti-usa.com |
|  | © 1987-2016 Safety Technology International Ltd. 6400_ExitStopper_Rev1016 |  |   |  |   |